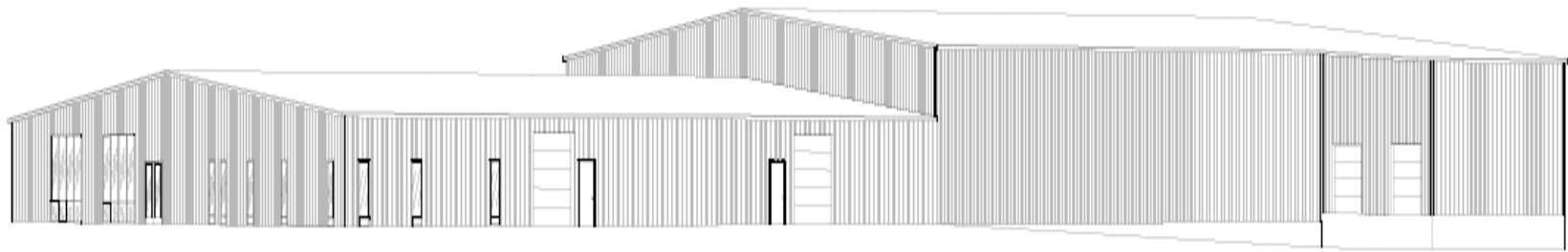




# **MONTANA FOOD BANK NETWORK**

## **Warehouse Expansion Project**



**PHASE ONE: The addition of 16,965 square feet of new warehouse space.**

**PHASE TWO: The addition of 45,900 cubic feet of freezer/cooler space.**

**PHASE THREE: The remodeling of 2,564 square feet and the addition of  
1,940 square feet of office area.**